



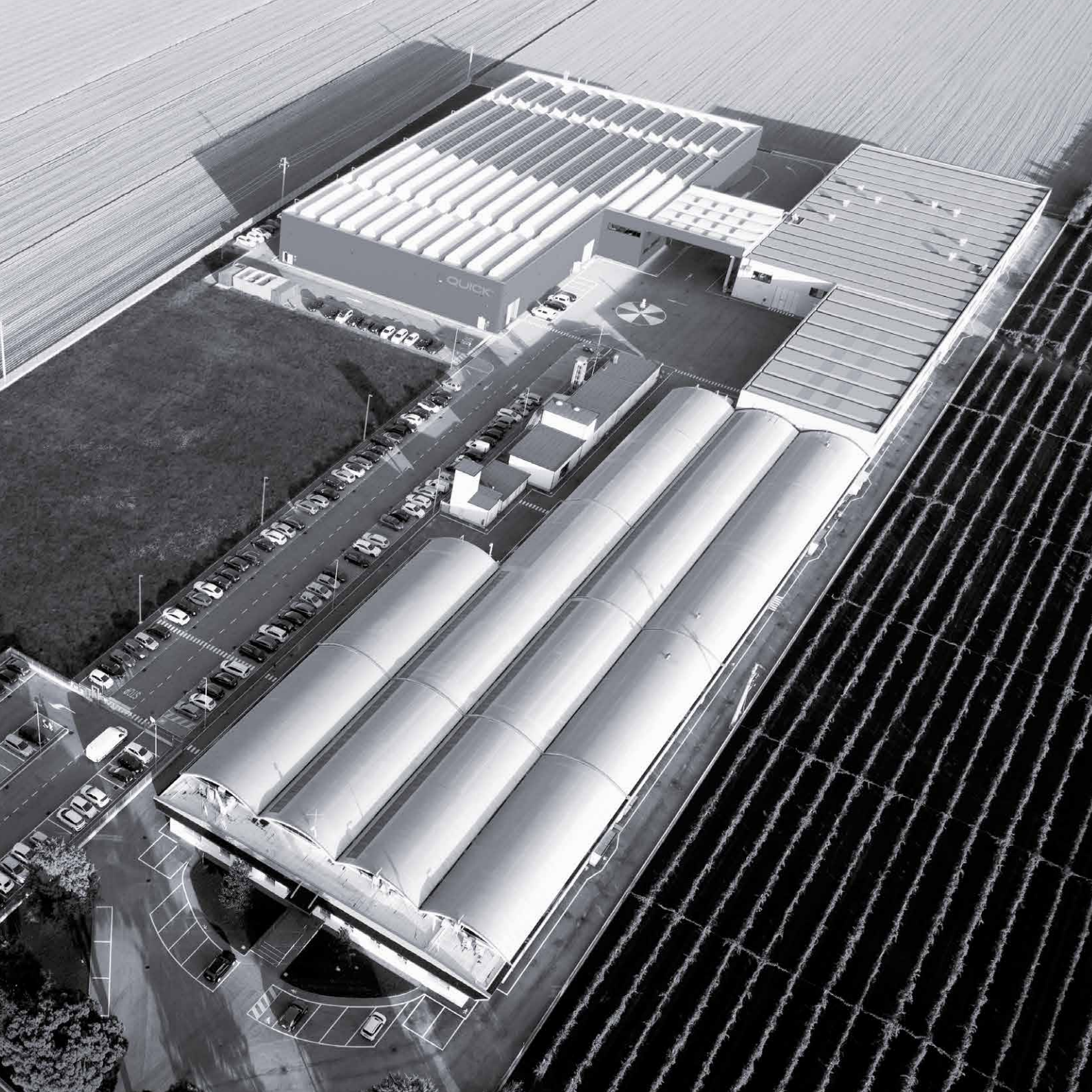
mc^2

QuickGroup

Quick Group, international leader in the nautical equipment sector, operates worldwide in more than 110 countries and since 1992 has been flying the Made in Italy flag.

From the beginning, the Group has been at the forefront of the times, and today it boasts an ambitious project of technological innovation and excellence hub for the nautical market.

Quick Group has overall 425 employees and extends its logistics and production capacity over 30,000 square meters between Italy, with its headquarters in Ravenna and three production sites, and abroad, with logistics and commercial sites in the United States and in England. The Group, led by Michele Marzucco as CEO and Founder, has been working in partnership since 2022 with Fondo Italiano d'Investimento SGR and Armonia SGR.






Quick Spa, global leader in the production of nautical equipment, is a trusted supplier of the best shipyards and a guarantee of quality for shipowners and yachtsmen. Quick Spa guarantees a qualified support service in over 110 countries.

The company began its expansion in the nautical market in 1992, drawing from its experience acquired in the industry since the early 1980s.

Quick Spa production and administrative headquarters is spread over 30,000 square meters (322,917 sf). The company's machine fleet is concentrated in the mechanical factory, Catt srl, a company acquired in 2003 and adjacent to the corporate headquarters. This operating structure has allowed the company to raise the quality of products, to respond proactively to the need for custom productions, to create new items according to specific customer requests, and, above all, to demonstrate MADE IN ITALY excellence.

QUICK SPA - ITALIAN HEADQUARTERS



A person is seen from the side, sitting on a white boat with a teal stripe. They are looking out at a vast, choppy sea under a bright, hazy sky. The boat's wake is visible in the water.

**THE SEA
WILL
NEVER
BE THE
SAME**

STABILIZATION AND BOAT TRIM

VIATOR, INTERCEPTA and QUICK GYRO:
these are the revolutionary products by MC².

Fins, Gyro and two Intercepta models are
extremely high-performing products in stand
alone mode and together they can revolutionize
the way of experiencing the sea.

THE SEACENTRIC SYSTEM:

Seacentric is a unique system created not only
to offer maximum comfort on board of any
type of boat but also to satisfy all shipowners'
needs, by offering a completely different marine
experience, commuting the sea itself.

A more efficient stabilization is thus obtained
thanks to an algorithm developed to get the
most out of the different dynamic responses
of the unique systems by combining their
respective strengths.



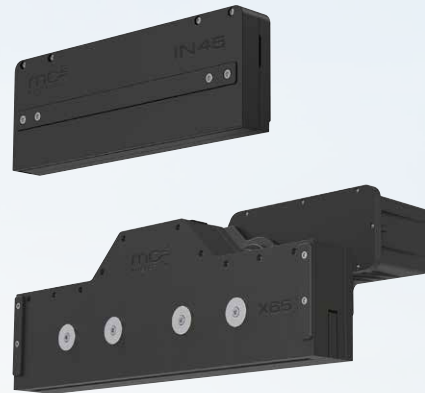
VIATOR
Anti-roll Fin Stabilizers

BENEFITS

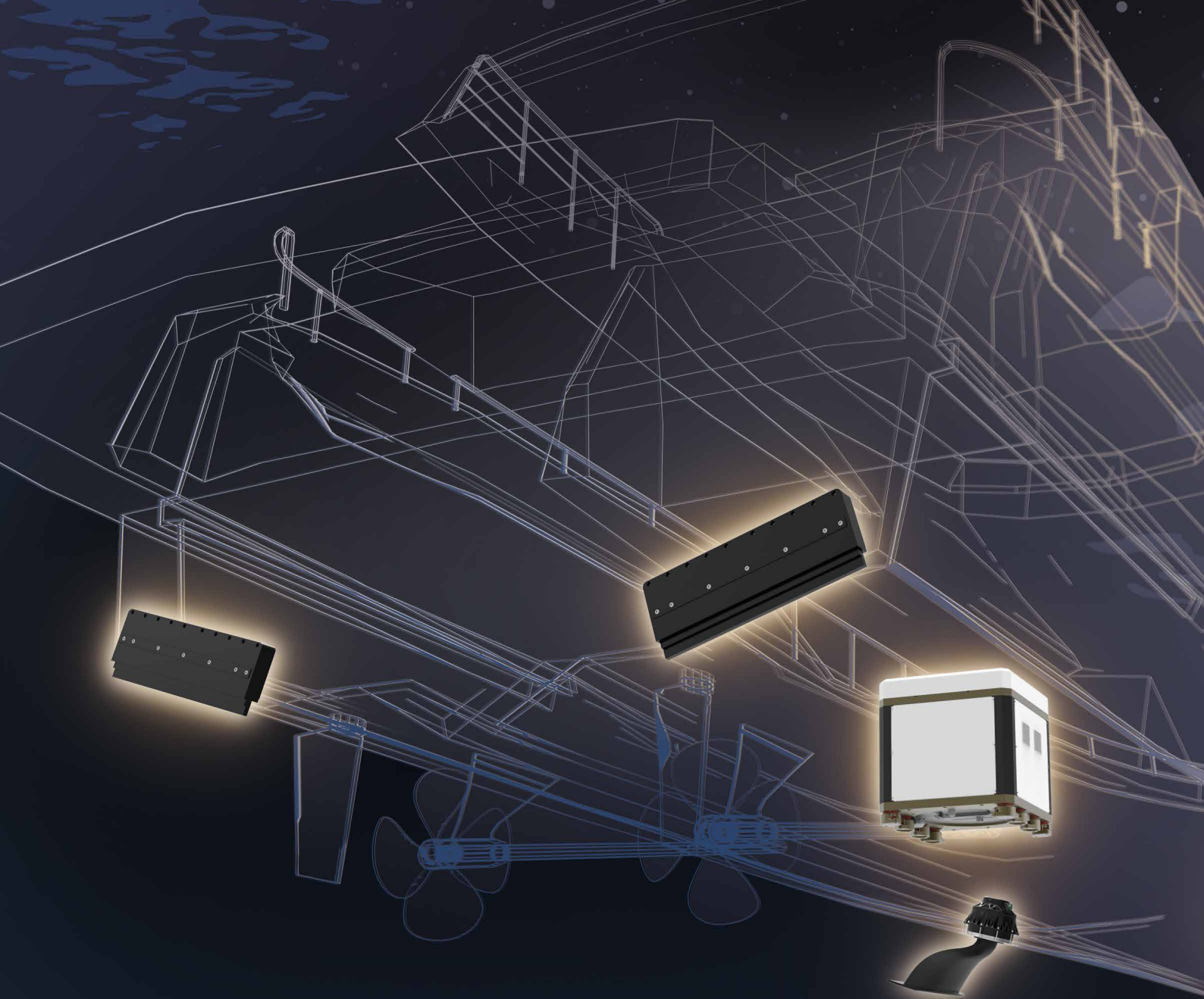
- Static and dynamic stabilization both at sea and at anchor
- Possibility of having smaller systems by adding the torque developed by each device compared to installing stand-alone systems that do not communicate with each other
- Better hydrodynamic performance and better weight distribution
- The integration between these systems therefore leads to greater stabilization, efficiency and optimization of the stabilization system by improving the boat's steering, consumption and dynamics.



QUICK GYRO
Anti-roll Gyro Stabilizers



INTERCEPTA
Interceptor Trim Tabs





LIMITLESS COMFORT IN A SINGLE SYSTEM


AT ANCHOR



OR UNDERWAY



Enjoy every moment on board!
The system performs both underway and at anchor,
guaranteeing 360° stabilization.

A photograph taken from the deck of a white yacht, looking forward along the wooden-planked deck towards the horizon. The yacht's white hull and a curved stainless steel railing are visible on the left. The ocean is a deep blue with white-capped waves, and the sky is a clear, pale blue.

The strengths of the systems provide a way more efficient stabilization.

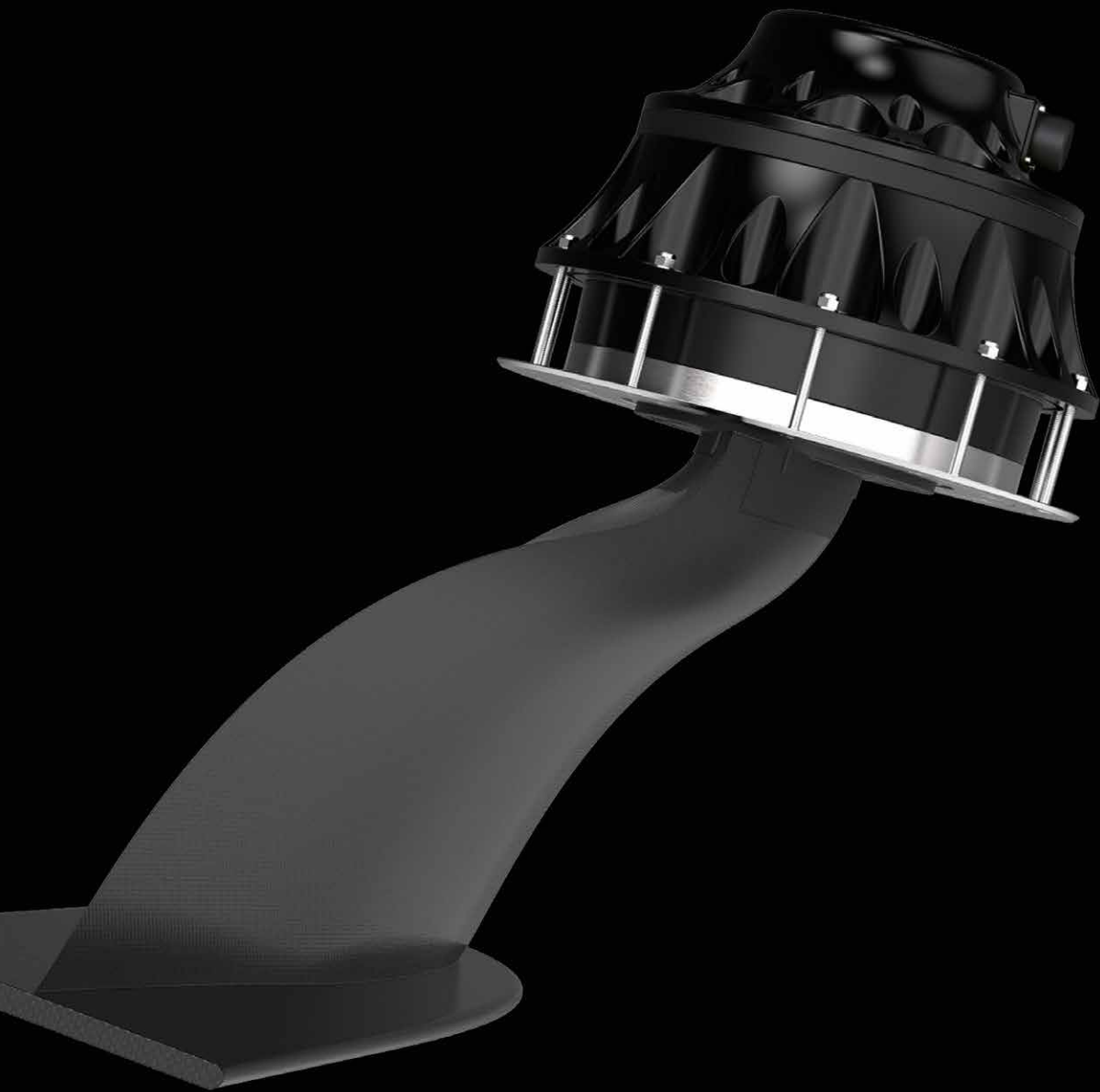
Roll reduction is guaranteed by Quick Gyro and Viator, while Intercepta eliminates pitch.

NO ROLL



NO PITCH





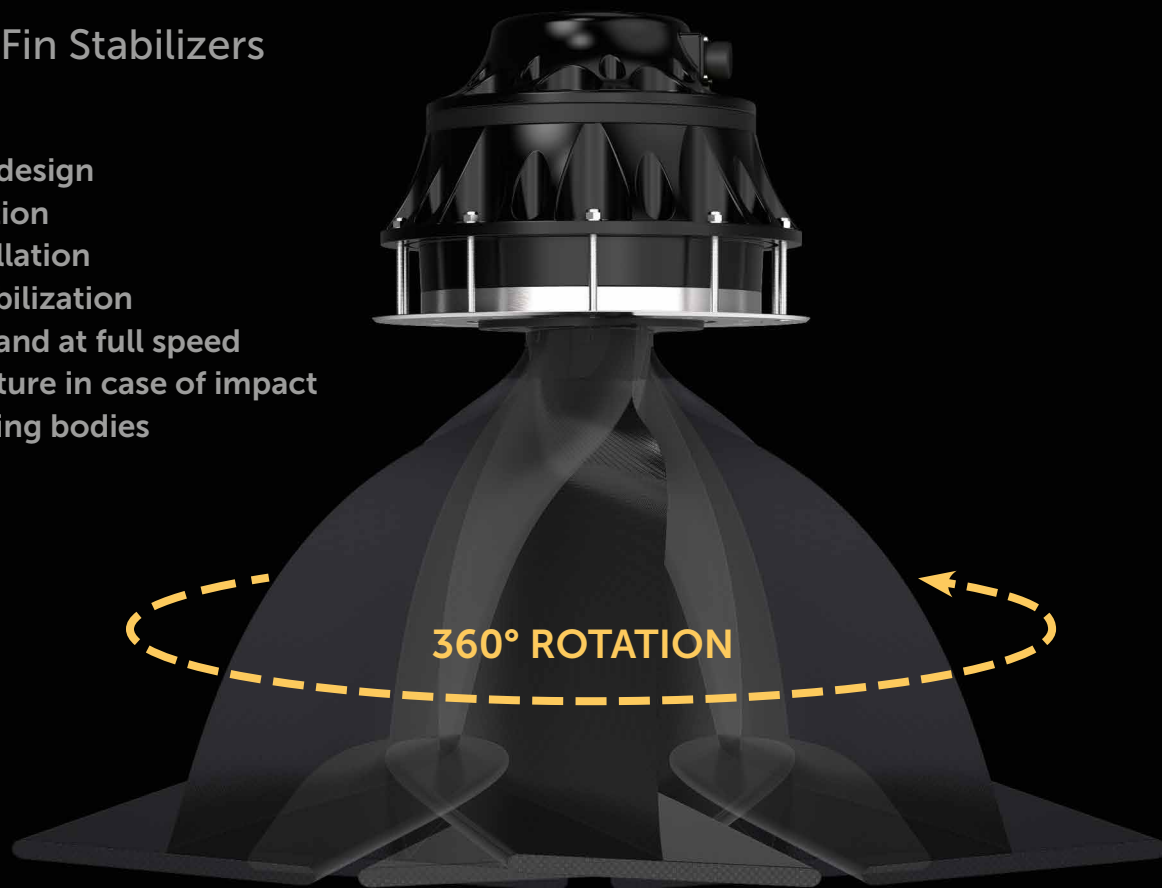
VIATOR

Anti-roll Fin Stabilizers

VIATOR

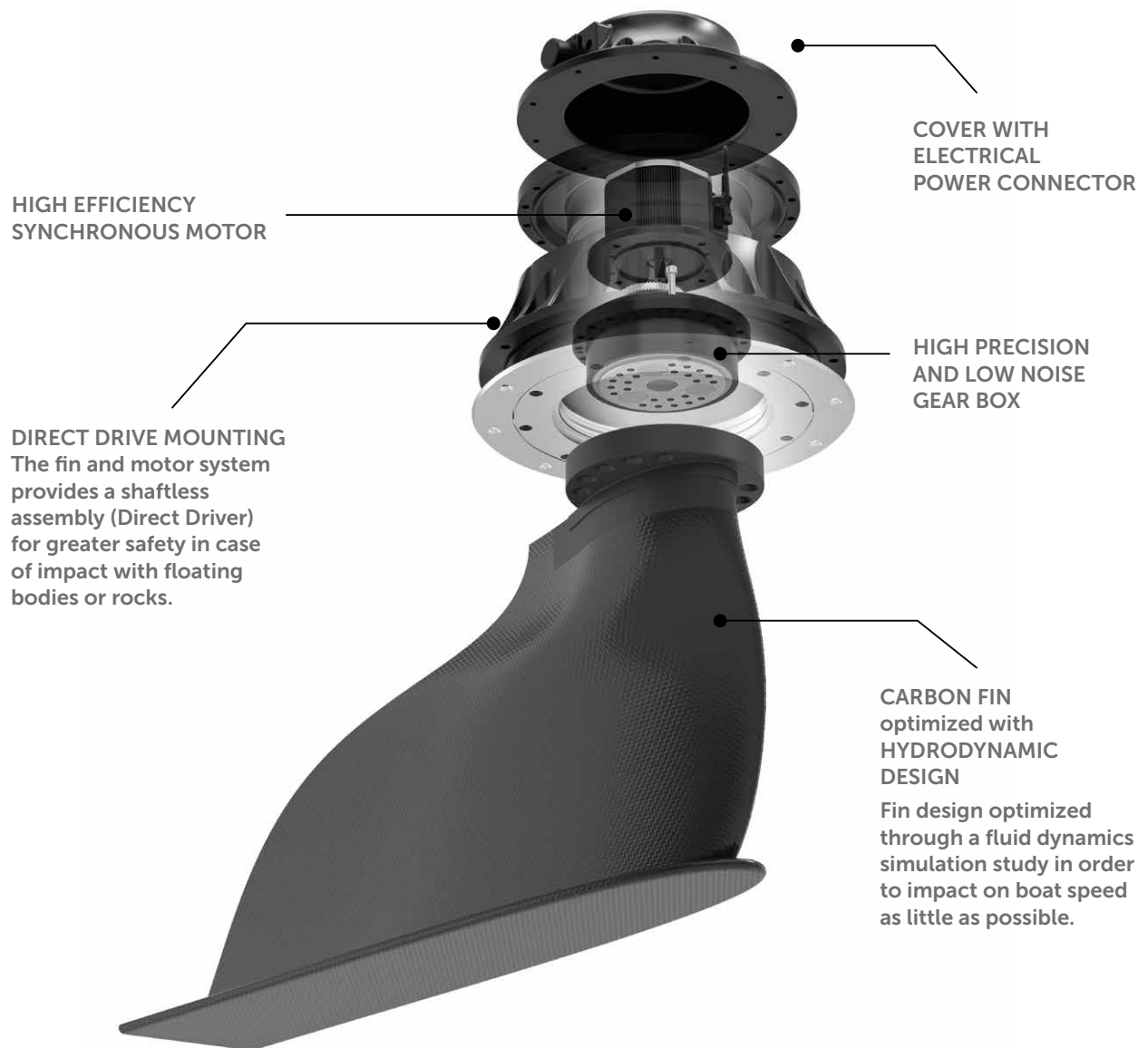
Anti-roll Fin Stabilizers

- Compact design
- 360° rotation
- Easy installation
- Active stabilization at anchor and at full speed
- Safety feature in case of impact with floating bodies



VIATOR is composed of a control unit that analyzes and predicts the dynamics of the boat, in order to modify the stabilization algorithms to adapt them to different situations.

The fins are powered by highly efficient, extremely compact and silent electric motors.



VIATOR

Anti-roll Fin Stabilizers



VT 700



VT 900



VT 1200



50-65 FT



60-80 FT



70-100 FT

VIATOR has been engineered and designed on state-of-the-art fluid dynamics calculations. The response in terms of performance is unprecedented. Viator, with the same square meters of the fin, is the most powerful on the market.



VT 1700



VT 2000



85-120 FT



100-145 FT

FLYWHEEL
ROTATION

mq2
QUICK GYRO

BOW/STERN

QUICK GYRO

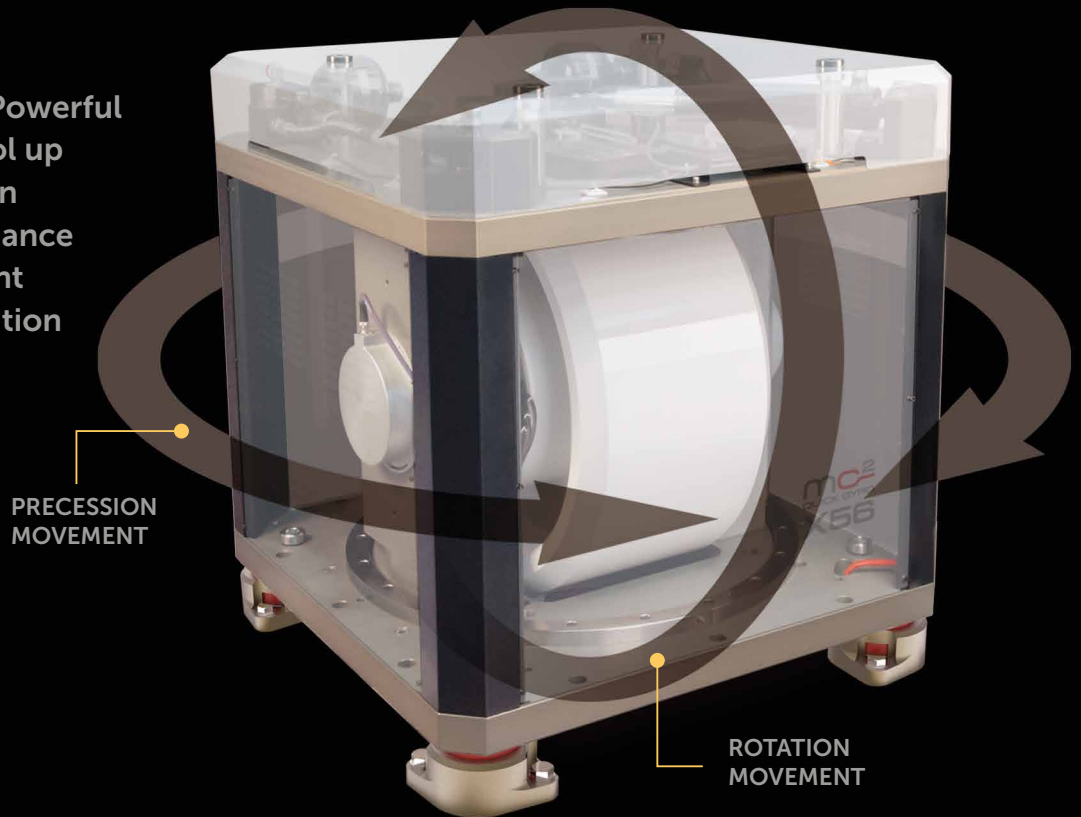
Anti-Roll Gyro Stabilizers

QUICK GYRO

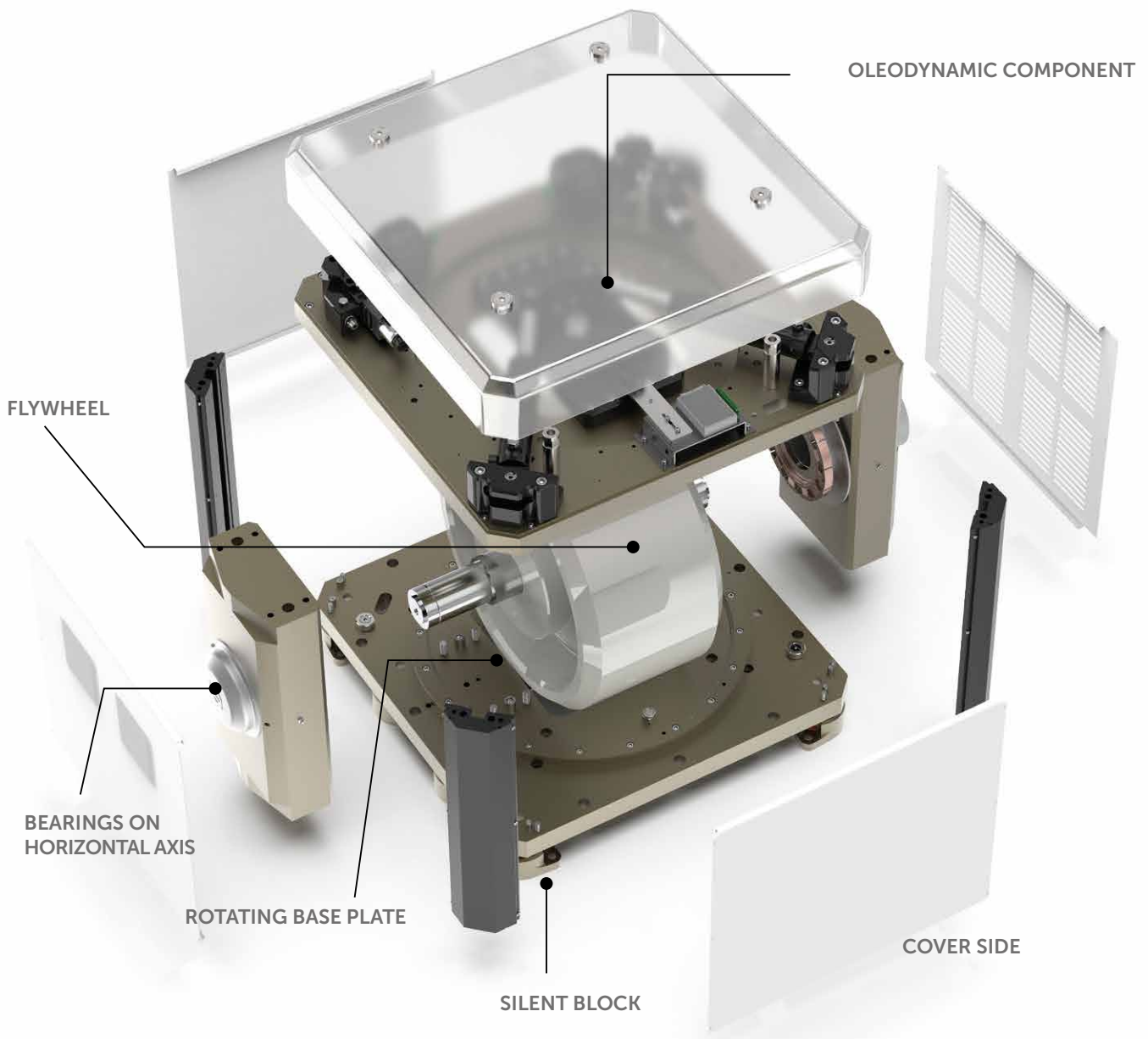
Anti-Roll Gyro Stabilizers

Benefits

- Compact and Powerful
- Super fast spool up
- Easy installation
- Lower maintenance
- Absolutely silent
- Natural Dissipation



Quick Gyro stabilizers can reduce boat roll up to 95% and are really effective both during sailing and at zero speed. The gyroscope flywheel rotates around a horizontal axis, evenly distributing the weight on the bearings, unlike other models with a vertical axis that primarily work on the lower bearing. The weight is better distributed, hence it requires less rotations and less effort and promotes quicker stabilization. These advantages make the product easy to install and reduce the need for maintenance; moreover, no water pumps or additional seawater intakes are necessary.



QUICK GYRO

Anti-Roll Gyro Stabilizers

XDC SERIES



X2 DC
12 Vdc



X3 DC
12 Vdc



X5 DC
12 Vdc



X7 DC
12 Vdc



X10 DC
12 Vdc



X13 DC
12 Vdc

X DC series for 12V systems

The range Quick Gyro DC for 12V systems is designed to meet the growing demand of the ship owners, by offering more specific and tailored products. The series includes the brand new X2-X3 as well as X5-X7-X10-X13 models, available as DC 12V versions. With integrated drivers, these stabilizers are extremely cutting-edge, designed for performance and plug & play installation.

The Quick Gyro X2 and X3 have been designed to be installed on smaller size boats. Quick Gyro X2 and X3 are perfect for center consoles or small size day cruisers, they are 12V DC battery-powered. They are extremely light in weight and characterized by a compact design.

XAC SERIES



X5
90-240 Vac



X7
90-240 Vac



X10
90-120 Vac
200-240 Vac



X13
90-120 Vac
200-240 Vac



X16
90-120 Vac
200-240 Vac



X19
90-120 Vac
200-240 Vac



X25
200-240 Vac



X30
200-240 Vac



X40
200-240 Vac



X56
200-240 Vac



X75
220-240 Vac
380 Vac



INTERCEPTA

Interceptor trim tabs

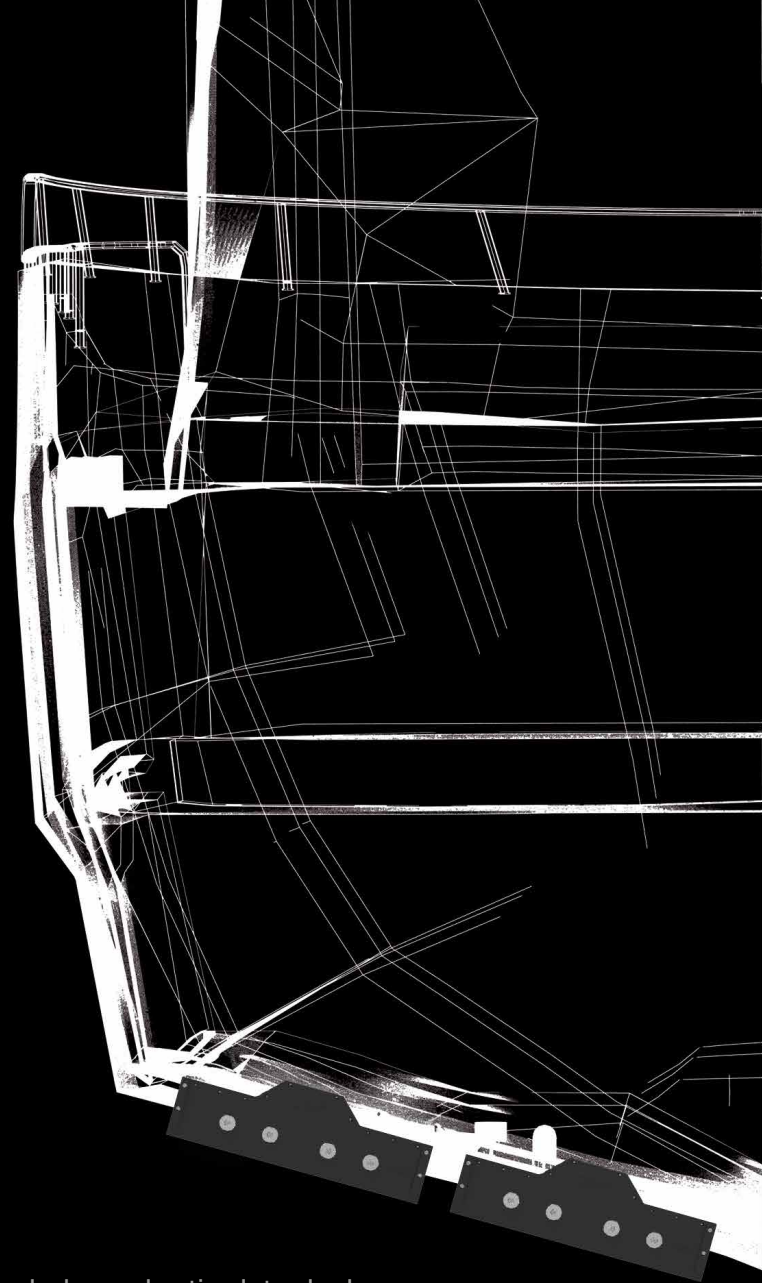
INTERCEPTA

Interceptor trim tabs - X Series

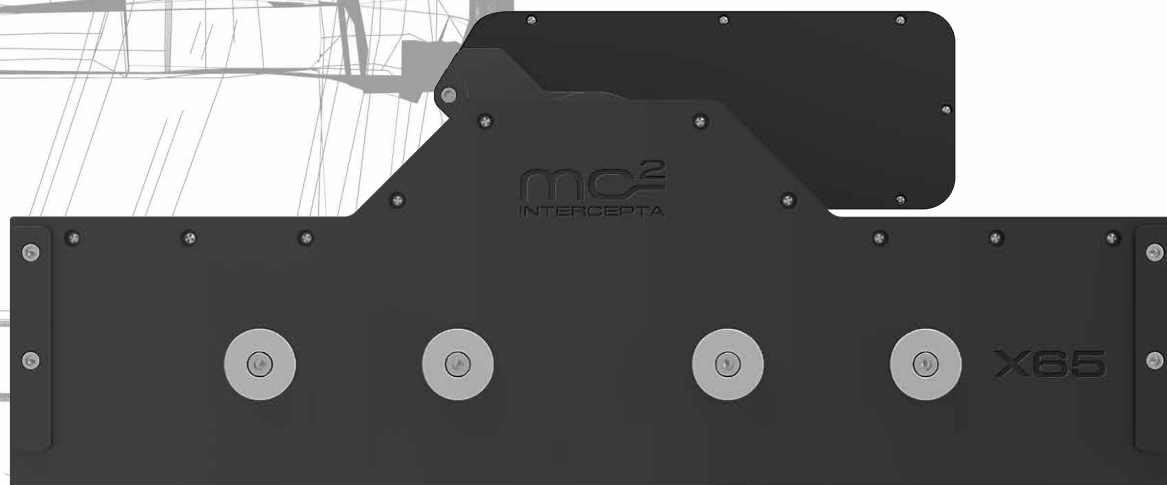
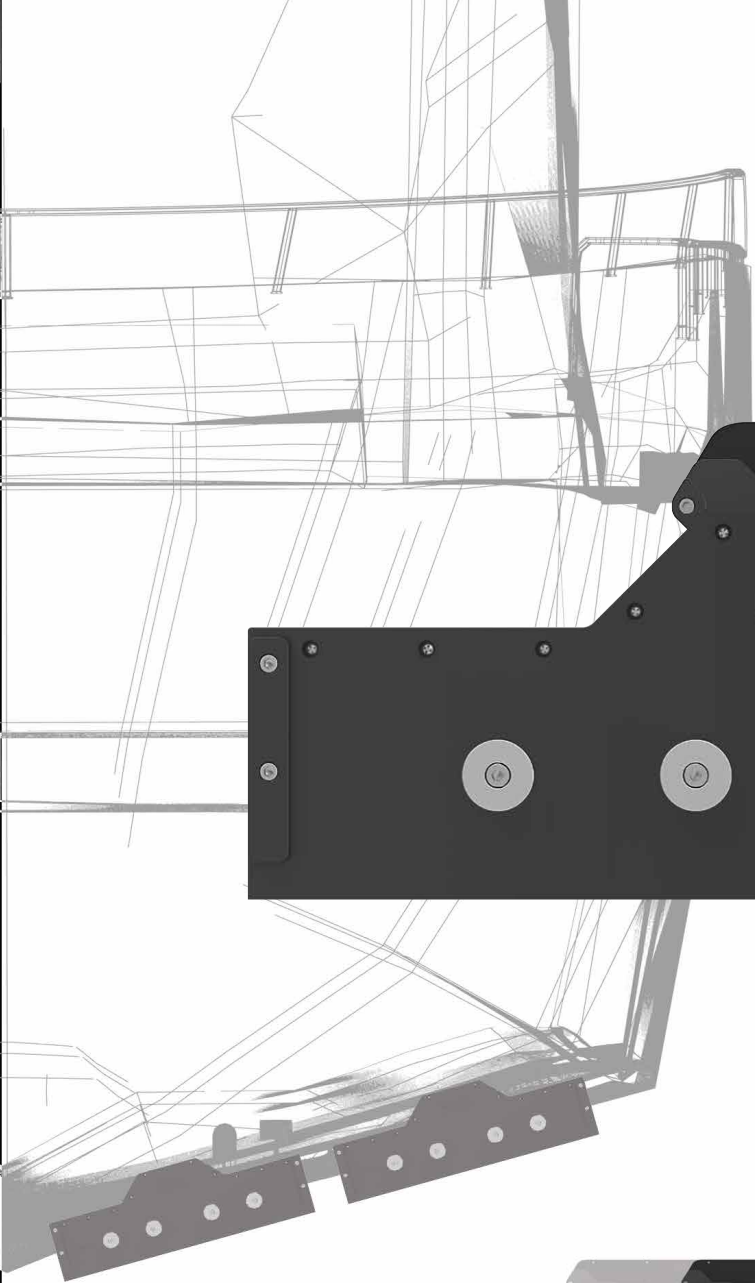
- Custom design and size, perfect for every need
- Motor position adjustable on request
- 4 standard and ready to use models
- Motor placed inside the hull
- Active stabilization
- Easier turn
- Less fuel consumption



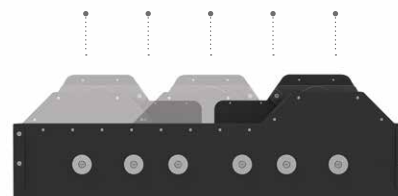
Seacentric system compatible
Xenta system compatible



INTERCEPTA X Series is the latest completely plug-and-play and active Intruder by MC². Since the entire series is crafted through mechanical processing, alongside the four standard models, we offer a Tailor-Made service powered by Xenta Systems. This service allows to customize the product to the centimeter, in addition to choosing the motor's position, which must always be installed within the hull.



adjustable motor position



INTERCEPTA

Interceptor trim tabs - X Series



X50



X65

INTERCEPTA X Series provides models with different lengths, for boats from 50ft to 130ft, which can be combined up to a maximum of 4 units.





X80



X100



INTERCEPTA

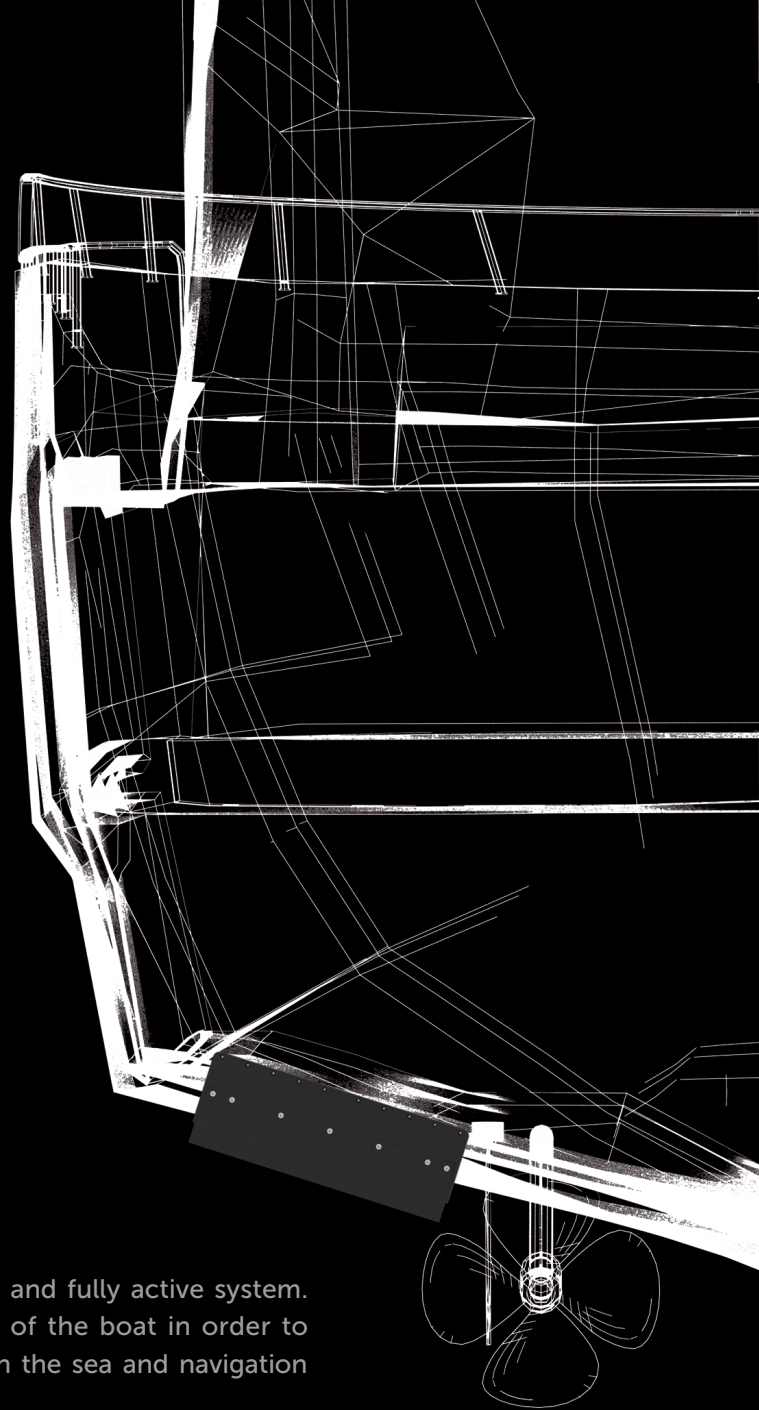
Interceptor trim tabs - IN Series

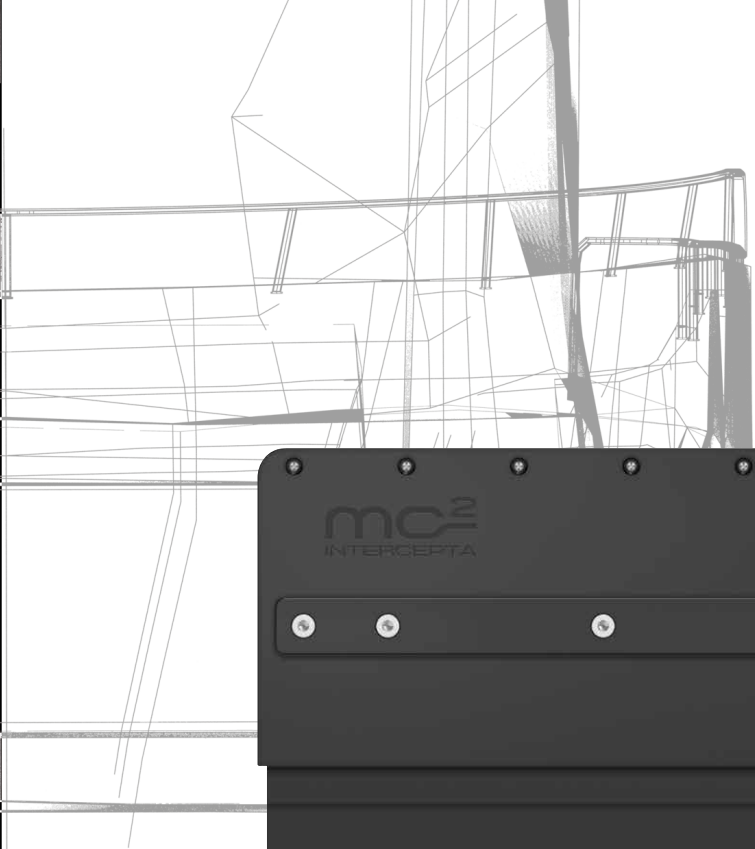
- Plug & play system
- Active stabilization system
- 12-24v power supply
- Integrated electric actuator
- Easy installation
- Easier turn
- Less fuel consumption



Seacentric system compatible
Xenta system compatible

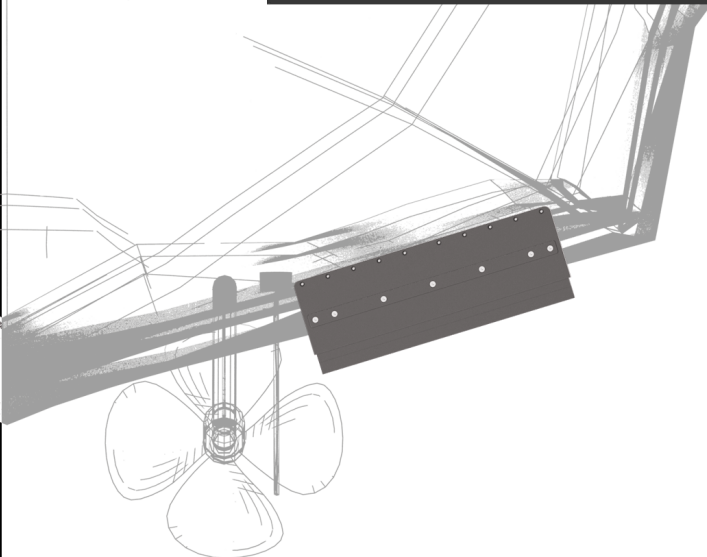
INTERCEPTA IN Series is a completely plug & play and fully active system. The central unit reads and predicts the dynamics of the boat in order to coordinate the movement of the trim tab based on the sea and navigation conditions.





mc²
INTERCEPTA

IN60



INTERCEPTA

Interceptor trim tabs - IN Series



IN30



IN45



IN60

INTERCEPTA IN Series provides models with different lengths, for boats from 20ft to 130ft, which can be combined up to a maximum of 6 units.





IN75



IN100



CONTROL SYSTEMS

REMOTE CONTROLS



VIATOR RC



QUICK GYRO RC

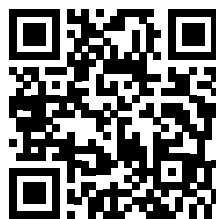


INTERCEPTA RC

VIATOR, QUICK GYRO, INTERCEPTA X and IN Series can be managed through the MC² Seacentric System remote touch panel with 5" graphic display. The panel can be used to monitor the gyro precession release, RPM, and width of the fin's angle of inclination or the Intercepta extension. User utilities include periodic maintenance reminders and alarms in case of failure. Adjustments and display preferences are also available.



FOLLOW US!



www.quickitaly.com





CDBRMC200E00

REV00 EN - December 2023

QuickGroup

Quick SpA - Via Piangipane 120/A - 48124 Piangipane (RA) ITALY - Tel. +39 0544 415061 - Fax +39 0544 415047 - www.quickitaly.com - quick@quickitaly.com

 **QUICK**[®] SPA

 **QUICKUSA**^{INC}

 **QUICK UK**

 **CATT**

 **SANGUINETI CHIAVARI**

 **XENTA**

 **nemo**